



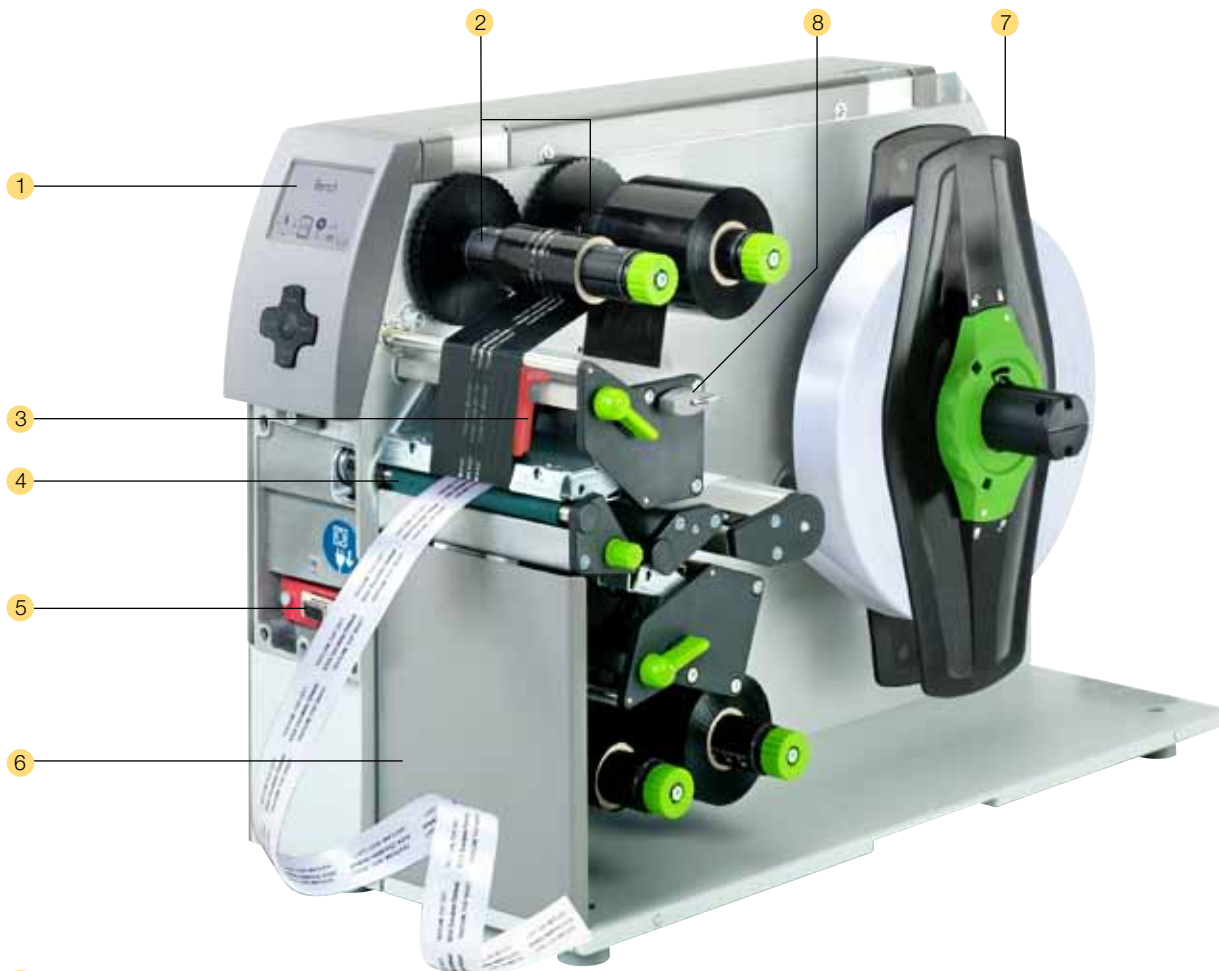
Label printer

XD4 For double-sided printing.

For double sided printing with centred material guide

- Two stacked print engines for simultaneous printing of front and back.
- No adjustment of the printhead for different widths of material.
- No drapery of ribbon.
- For continuous or prefabricated materials like paper, card board, textiles and synthetics.

- The gap height at the material sensor for flat tubes and synthetic tapes is up to 4 mm.
- The print speed for difficult printable materials is reduced to 30-125 mm/sec.
- Operation and software are compatible with the A⁺-series.



1 Big graphic display

White backlight guarantees optimal legibility.

2 Ribbon retainer

Easy and centred insertion of the ribbon with the threepart tightening axles. Due to the imprinted spacer positioning of the ribbon is facilitated.

3 Easy adjustment

The printhead is pressed down with two sliding toggles. One is mounted to the left label margin, the other one is pushed to the right label margin.

4 Material guide

Precise printing due to the material guide located directly behind the print roller. The width is adjusted with a spindle.

5 Peripheral connection

Add-on modules like cutter, external rewinder, present sensor, peel-off adapter and applicators can be easily

connected via USB peripheral interface.

All peripheral devices are put onto the printer with two gudgeons and fixed with a bolt.

6 Solid, buckling resistant metal chassis

It is made of dye-cast aluminium. All devices are assembled to it.

7 Roll holder

Applicable for core diameters as of 38 mm. (we include adapters for core diameters from 76 mm for a better winding of the labels).

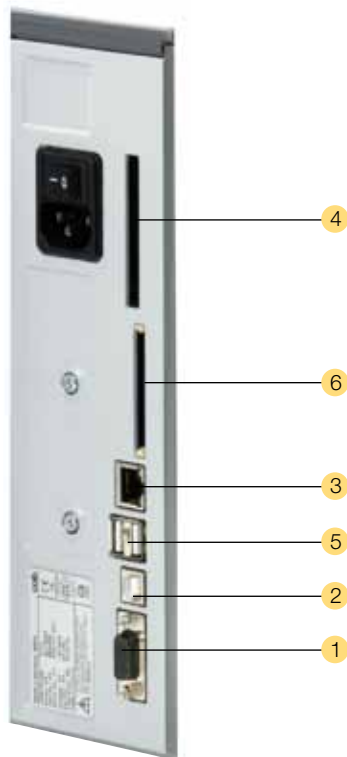
The spring mounted margin stop ensures constant tension while feeding and therefore a highly precise imprint.

8 Only one tool for all maintenance tasks

The Allen key is located ready to hand directly at the printer.



All required interfaces



- 1 RS232C interface *without function*.
- 2 USB 2.0 Slave interface.
- 3 Ethernet 10/100 Base T-interface with TCP/IP.
- 4 Slot for Wireless LAN-Wifi-card.
- 5 Two USB-Master-interfaces to connect an external operation panel, keyboard, scanner or Service Key.
- 6 Slot for memory card CompactFlash Type I.

Option



cab WLAN card 802.11 b/g.

Accessories for the stand-alone operation



Memory card

CompactFlash Type I



Compact keyboard

Connection: USB
 Number of keys: 86
 L x W mm: 282 x 132,
 Cherry G84-4100



Standard keyboard

Connection: USB
 Number of keys: 115
 L x W mm: 460 x 192
 Cherry G83-6105

The functions of the devices and conformity to CE-standards are only warranted by using the accessories made by cab or recommended by cab.

Stand-alone operation

Printing with a cab printer without PC.

The layout of the labels is created either with the label software or direct programming via text editor directly on the PC. Label formats, fonts and graphic data, serial data and data base contents are saved or imported on the CF memory card or the internal IFFS printer memory.

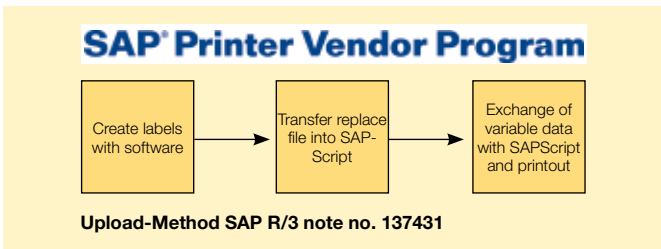
Only variable data is sent to the printer via keyboard or host computer before being printed out. Data of a barcode scanner or a scale can be additionally received by the printer.



J	Job Start
H 100	Speed (100 mm/s)
O R	Orientation rotated by 180°
S l1;0,0,68,70,100	Size of label (100x68 mm, gap 2 mm)
T 10,10,0,5,pt20;sample	Text object/font: Swiss bold, 20 pt
B 10,20,0,EAN-13,SC2;401234512345	Barcode EAN 13, size SC 2
G 8,3,5,0;R:30,9,0,3,0,3	Graphic, box 30 x 9 mm, Line strength 0.3 mm
A 1	Number of labels (in this example 1)

Direct programming with J-Script

The printer language is easy to understand and integrate into your host system. Linkage of variable data with host application. Label design, graphics and fonts are recorded on the compact flash card. The host computer sends only the variable data to the printer.



Integration into SAP R/3

In collaboration with SAP cab developed the so-called "Replace method" in order to control the cab printers with SAPScript from SAP/R3.

As a Silver Level-partner in SAP's Printer Vendor Program cab has access to the SAP development area for optimal printer support in a SAP environment.

SAP and R/3 are registered trademarks of SAP AG.

```

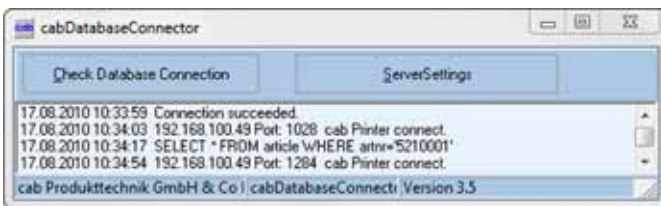
calypso.lib - Editor
Datei Bearbeiten Format Ansicht ?
<ABC>
label start
input a$
if left$(a$,15)="194300301480070" then
  print "R t2;";mid$(a$,16)
endif
if left$(a$,15)="194300300580172" then
  print "R t3;";mid$(a$,16)
endif
if left$(a$,15)="194300301970073" then
  print "R t1;";mid$(a$,16)
endif
if a$="Q0001" then
  print "A 1"
endif
goto start
  
```

abc - Basic Compiler

As an integrated element of the firmware it enables the printer to process data via BASIC programming before being transmitted to print editing. Thereby external printer languages can be replaced or data from other systems, e.g. SPS or a scale, can be transferred to be printed on different label sizes.

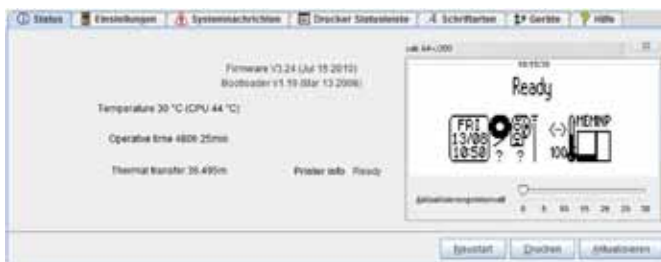


Example of use:
Connection to a scale



Database Connector

In the stand-alone mode with additional network connection the Database Connector enables stand-alone printers to link up data from a SQL-compatible database and to print. Data can be rewritten and modified simultaneously with the printing process.



Printer monitoring with Intra- and Internet

The integrated HTTP- and FTP-Server enables, with standard programs like web browser or FTP-clients, the print monitoring, configuration, the firmware-update and the administration of the memory card. Status signals, warning or error signals are sent to users or administrators either as email or SNMP-datagram via SNMP- and SMTP-clients. Synchronization of time and date with a time server.

cab Network Manager

Gerät Werkzeuge Einstellungen Hilfe

Gerät	Name	Gruppe	Typ	Adresse	Status	PIN
Development	Support Text Printer	Support	cab Mach4C005	192.168.100.48	Ready	000
192.168.100.65	Support Text Printer	Support	cab Mach4C005	192.168.100.55	Not	000
192.168.100.79	Hi Res Printer	Support	cab 44+000	192.168.100.58	Not	000
192.168.100.82		Development	A3/300	192.168.100.65	Not	000

Administration Network Manager

The cab Network Manager enables the user to control multiple printers across a network simultaneously. It supports monitoring, configuration, firmware updates, memory card, datasynchronization and PIN-administration centrally.

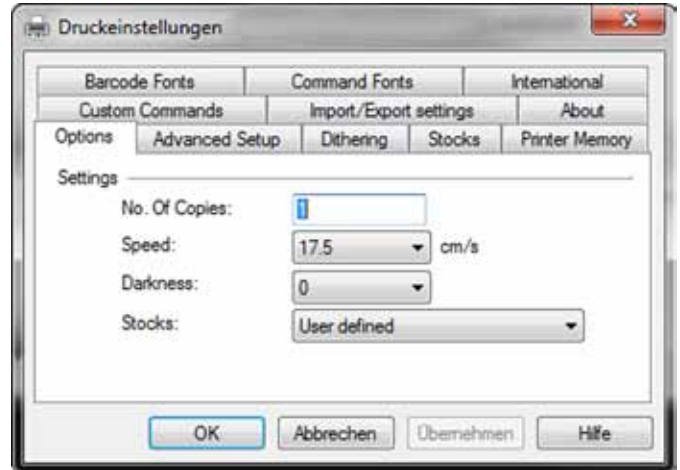


WHQL-accredited Windows printer driver for

- Windows 2000
- Windows XP
- Windows Vista
- Windows 7
- Windows Server 2003
- Windows Server 2008
- Windows Server 2008 R2

Our printer drivers are officially accredited and signed by Microsoft. They offer highest stability on your Windows operating system. The programs Word, Excel, Access, Corel Draw etc. permit the design and printing of labels.

Microsoft® is a registered trademark of Microsoft Corporation.



Label software

cablabel R2+

A powerful label software for free, specially designed for cab printers and print & apply systems.

The ideal design of a label is realizable by using different fonts, barcodes and graphics in variable heights, widths and printing directions.

The cab printers offer, besides the loadable MS Windows-available TrueType Fonts, a large number of internal bitmap and vector fonts. Due to the support of the most commonly used codepages country-specific special characters are also printable.

Highly productive functions permit the design and printing of complex labels within just a few minutes. cablabel R2+ supports special functions of the cab printers such as real-time clock, printer counter, stand-alone operation without PC, circular fonts or the display of the data stream into a data file. The MDI-technology permits the synchronous tensioning of several labels and the switching of different objects.



Cablabel R2+ is available in 24 different languages for the following operating systems:

- Windows XP
- Windows Vista
- Windows 7
- Windows Server 2003*
- Windows Server 2008*

*Terminalserver / Citrix are not supported.

Additional label software...

...such as Codesoft, Nicelabel, Easylabel, Bartender, Label Matrix or Labelview support cab's transfer printers and print & apply systems.

More information is available on our homepage.

1. Printhead		XD4M/300
Print method		Thermal transfer
Print resolution dpi		300
Print speed up to mm/s		30, 40, 50, 75, 100, 125
Print width mm		105.6
2. Material		
Continuous rolls or fan-folded		Paper, cardboard, textiles, synthetics PET, PE, PP, PVC, PU, Acrylat, PI
Material thickness mm / weight g/m ²		0.05 - 0.8 / 60 - 300
Width:	Continuous material ¹⁾ mm	10 - 110
	Shrinkable tubing mm	3.5 - 110
Height ¹⁾ up to mm		2000
Media roll:	Total diameter up to mm	300
	Core diameter mm	38 - 100
	Winding direction	outside or inside
3. Ribbon		
Ink		outside or inside
Roll diameter up to mm		80
Core diameter mm		25
Ribbon length variable up to m		500
Width ²⁾ up to mm		114
5. Dimensions of the printer		
Height x Depth mm		395 x 554
Width mm		248
Weight kg		21
6. Label sensor		
See-through sensor		for leading edge of the label or punching marks and end of material
Reflective sensor from the bottom		for printing marks
Distance from the center to the left mm		0 - 53
7. Electronics		
Processor high speed 32 Bit ColdFire/Taktrate MHz		266
(RAM) MB		64
Memory IFFS MB Flash		8
Slot for memory CompactFlash-card Type I		■
Slot for Wireless LAN-card		■
Battery cache for		Real-time clock, printout of time and date Storage of data with shut-down
Warning signal		Acoustic signal when error
8. Interfaces		
USB 2.0 High Speed Slave for PC-connection		■
Ethernet 10/100 Base T, LPD, RawIP-Printing, ftp-Printing, DHCP, HTTP, FTP, SMTP, SNMP, TIME, Zeroconf, mDNS, SOAP		■
Peripheral connection		■
WLAN card 802.11b/g WEP/WPA PSK (TKIP)		□
2 x USB Master for		external operation panel, keyboard, scanner or service key
9. Operation data		
Power supply		100 - 240 V ~ 50/60 Hz, PFC
Power consumption		max. 300 W
Temperature / Humidity:	Operation	+5 - 40°C, / 10 - 85 % not condensing
	Storage	+0 - 60°C, / 20 - 85% not condensing
	Transport	-25 - 60°C, / 20 - 85% not condensing
Approvals		CE, FCC class A, CB, CCC, UL

■ Standard □ Option

¹⁾ Depending on label size, material and adhesive limitations are possible. Critical material or applications have to be tested and cleared.

²⁾ The ribbon should be in accordance with the width of the label material to avoid ribbon wrinkling.

10. Operation panel	
Buttons/LED display	Pause, Feed, Cancel, Menu, Enter, 4 x Cursor
LCD graphic display	Text 4 lines, ca. 20 characters per line
Width x Height mm	60 x 40
11. Settings	
	Time, date, digital or analog clock
	25 language settings
	system settings, print parameters, interfaces, security
12. Monitoring	
Stop printing if	End of ribbon End of labels Printhead open
On the display	Data reception Clock WLAN field intensity Date sheet Ethernet state abc Debug Used memory Input buffer Temperature printhead Access to memory card Remaining quantity of ribbon
13. Test routines	
System diagnosis	When switched on with testing of printhead
Short Status, Status print	font list, device list, WLAN state, profile of label, test grid, monitor mode, PPP state
Status reports	Extensive status print with information about setting, e.g. print length counter, runtime counter etc. Request of machine state via software command. Detailed status messages on the display, e.g. network error-no link, barcode error etc.
14. Fonts	
Font types	5 Bitmap fonts incl. OCR-A, OCR-B and 3 Vector fonts Swiss 721, Swiss 721 Bold and Monospace 821 available internally, loadable TrueType fonts. Optional Chinese (simplified Chinese) Optional Thai
Character sets	Windows 1250 up to 1257, DOS 437, 737, 775, 850, 852, 857, 862, 864, 866, 869, EBCDIC 500, ISO 8859-1 up to -10 and -13 up to -16, WinOEM 720, UTF-8, Macintosh Roman, DEC MCS, KOI8-R. All West and East European latin, cyrillic, greek, hebrew and arabic characters are supported. Optional Thai and Chinese
Bitmap-Fonts	Size of width and height 1 - 3 mm zoom 2-10. Orientation 0°, 90°, 180°, 270°
Vector-/TrueType fonts	Size of width and height 0.9 - 128 mm variable zoom, Orientation 360° in steps of 1°
Font formats	Bold, italic, underlined, outline, negative, grey, vertical, depending on character fonts
Font width	Variable

15. Graphics		
Graphic elements	Line, arrow, box, circle, ellipse, filled and filled with fading	
Graphic formats	PCX, IMG, BMP, TIF, MAC, GIF, PNG	
16. Barcodes		
Linear Barcodes	Code 39, Code 93 Code 39 Full ASCII Code 128 A, B, C Codabar EAN 8, 13 EAN/UCC 128 EAN/UPC Appendix 2 EAN/UPC Appendix 5 FIM HIBC	Interleaved 2/5 Ident- and leader code of Deutsche Post AG JAN 8, 13 MSI Plessey Postnet RSS 14 UPC A, E, E0
2D-Codes	Aztec, Codablock F, Data Matrix, PDF 417, Micro PDF 417, UPS Maxicode, QR-Code, RSS 14 truncated, limited, stacked and stacked omnidirectional, EAN-Datamatrix, GS1 Data Bar	
	All codes variable in height, module width and ratio. Orientation 0°, 90°, 180°, 270°. Optionally with check digit, printed characters and Start/Stop code depending on code type.	
17. Software		
Programming	J-Script direct programming <input checked="" type="checkbox"/>	
	abc-Basic Compiler <input checked="" type="checkbox"/>	
	Database Connector <input type="checkbox"/>	
System diagnosis/ Administration	printer monitoring <input checked="" type="checkbox"/>	
	Network Manager <input type="checkbox"/>	
Label software	cablabel R2+ <input checked="" type="checkbox"/>	
	Codesoft, Nicelabel, Easylabel <input type="checkbox"/>	
	Bartender, Label Matrix, Labelview <input type="checkbox"/>	
Windows driver certified	32/64 bit for Windows 2000 Server 2003 Windows XP Server 2008 <input checked="" type="checkbox"/> Windows Vista Server 2008 R2 Windows 7	
Stand-alone operation		<input checked="" type="checkbox"/>
		Standard <input checked="" type="checkbox"/>
		Option <input type="checkbox"/>
		Authorized distribution by resellers <input type="checkbox"/>



Innovative technology for better climate protection.
Energy-saving.
Environmentally conscious.

The specifications are according to our current technical knowledge. They are subject to change.

Please recall current data from www.cab.de

Cut. Perforate. Stack.



Cutter

The cutter is used to cut paper, pressure sensitive labels, cardboard, textiles, synthetics or heat shrink tubes.

Perforation cutter and cutter

The perforation cutter also permits the perforation of the material in order to separate it manually.

Cutter tray

The cutter tray can pile up up to 50 labels.



Stacker with cutter

The printed materials are cut and piled up with the stacker. The print job stops when the height of the pile is reached.

There might be restrictions at the use of stiff or curved materials. We recommend the testing of such materials at cab.

Storage table label width x height





The storage table and the protective cover are adjusted to the label size and have to be ordered separately.






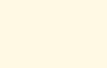
Base frame A4 / XD



With the base frame the devices can be arranged on the table in any order.

	Cutter CU4	Perforation cutter and cutter PCU4	Stacker with cutter ST4/M
Material width up to mm	110	110	20 - 100
Weight of material gr/m ² /cardboard	60 - 500	60 - 300	60 - 300
Material thickness mm	0.05 - 0.8	0.05 - 0.8	0.05 - 0.8
Cutting length mm	< 5	< 5	20 - 150
Gap height up to mm	2.5	4.5	1.2
Cuts/min.	120	Cutting 120 / Perforating 150	120
Stop print job if:	Final position not reached	Final position not reached	Final position not reached, cover open, height of pile is reached
		Perforating	Piling up reached
		Web width mm 0.5 Web distances mm 2.5 or 10	Height of pile up to mm 140 Further heights on request

Part No.	Hardware	dpi
	5959640	Label printer XD4M/300
Content of delivery		
DVD:	Label printer, Power cable Type E+F, length 1.8 m, Connecting cable USB, length 1.8 m, Operation manual de/en Operating manual de/en, Configuration manual de/en/fr, Service manual de/en, Spare part list de/en, Programming manual en, Windows printer driver 32/64 bit in 19 languages for Windows 2000 Server 2003 Windows XP Server 2008 Windows Vista Server 2008 R2 Windows 7 Label software cablabel R2+in 24 languages, Database Connector en	
Part No.	Expendable parts	
	5954072.001	Printhead 4/300
	5954180.001	Print roller DR4
Part No.	Accessories	
	5948000	Cutter CU4
	5960050.351	Perforation cutter PCU4/2,5
	5960050.352	Perforation cutter PCU4/10
	5541313	Stacker with cutter ST4/M
	55xxxxx	Storage table ST4/M, label B x H
	5959920	Base frame XD
	5901630	Compact keyboard USB, Cherry G84-4100
	5901626	Standard keyboard USB, Cherry G83-6105
	5561043	Memory card CompactFlash Typ I

Part No.	Interfaces	
	5561041	WLAN-card 802.11 b/g
Part No.	Connection cable	
	5918008	Patch cable KAT 5e, 3 m grey
Part No.	Software	
	DL 40100	Database Connector Licence
	5580215	Administration Network Manager
	Content of delivery	Label software cablabel R2+ on request
		Codesoft, NiceLabel, Easylabel
9008486		Programming manual english, printed copy

The specifications are according to our current technical knowledge. They are subject to change.

The cab delivery program

Label printer A+ series



Label printer XD4
for double sided printing



Label printer XC6
for two-tone printing



Label printer e4



Label printer MACH4



Labels / Ribbons



Label dispenser HS150



Print and Apply Hermes+



Print module PX-series



Label software



Laser marking systems
FL-series



Laser safety housing



- Headquarter in Germany
- cab subsidiaries
350 distribution partners
in more than 80 countries.



cab is represented in every active commercial centre - worldwide.

Four your efficient process: you can count on us in your day-to-day operations.

Welcome to our website – www.cab.de

Customer proximity worldwide with perfect service and short reaction time.

Germany

cab Produkttechnik GmbH & Co KG
Postfach 1904
D-76007 Karlsruhe
Wilhelm-Schickard-Str. 14
D-76131 Karlsruhe
Telefon +49 721 6626-0
Telefax +49 721 6626-249
www.cab.de
info@cab.de

France

cab technologies s.a.r.l.
F-67350 Niedermodern
Téléphone +33 388 722 501
www.cab.de
info@cab-technologies.fr

España

cab España S.L.
E-08304 Mataró (Barcelona)
Teléfono +34 937 414 605
www.cab.de
info@cabsl.com

USA

cab Technology Inc.
Tyngsboro MA, 01879
Phone +1 978 649 0293
www.cabtechn.com
info@cabtechn.com

South Africa

cab Technology (Pty.) Ltd.
2125 Randburg
Phone +27 11-886-3580
www.cab.de
info@cabtech.co.za

Asia 亞洲分公司

希愛比科技股份有限公司
cab Technology Co., Ltd.
台灣台北縣中和市中正路 700 號 9F-8
Junghe 23552, Taipei, Taiwan
電話 Phone +886 2 8227 3966
網址 www.cabasia.net
詢問 cabasia@cab.de

China 中国

銳博(上海)貿易有限公司
cab (Shanghai) Trading Co.,Ltd
上海市延安西路2299弄11C60室
电话 Phone +86 21 6236-3161
询问 cabasia@cab.de

© Copyright bei cab

Representatives in other countries on request.

This documentation as well as the translations hereof are properties of cab GmbH & Co KG.
The replication, the processing, the reproduction or the propagation on the whole or in parts requires our prior written agreement.